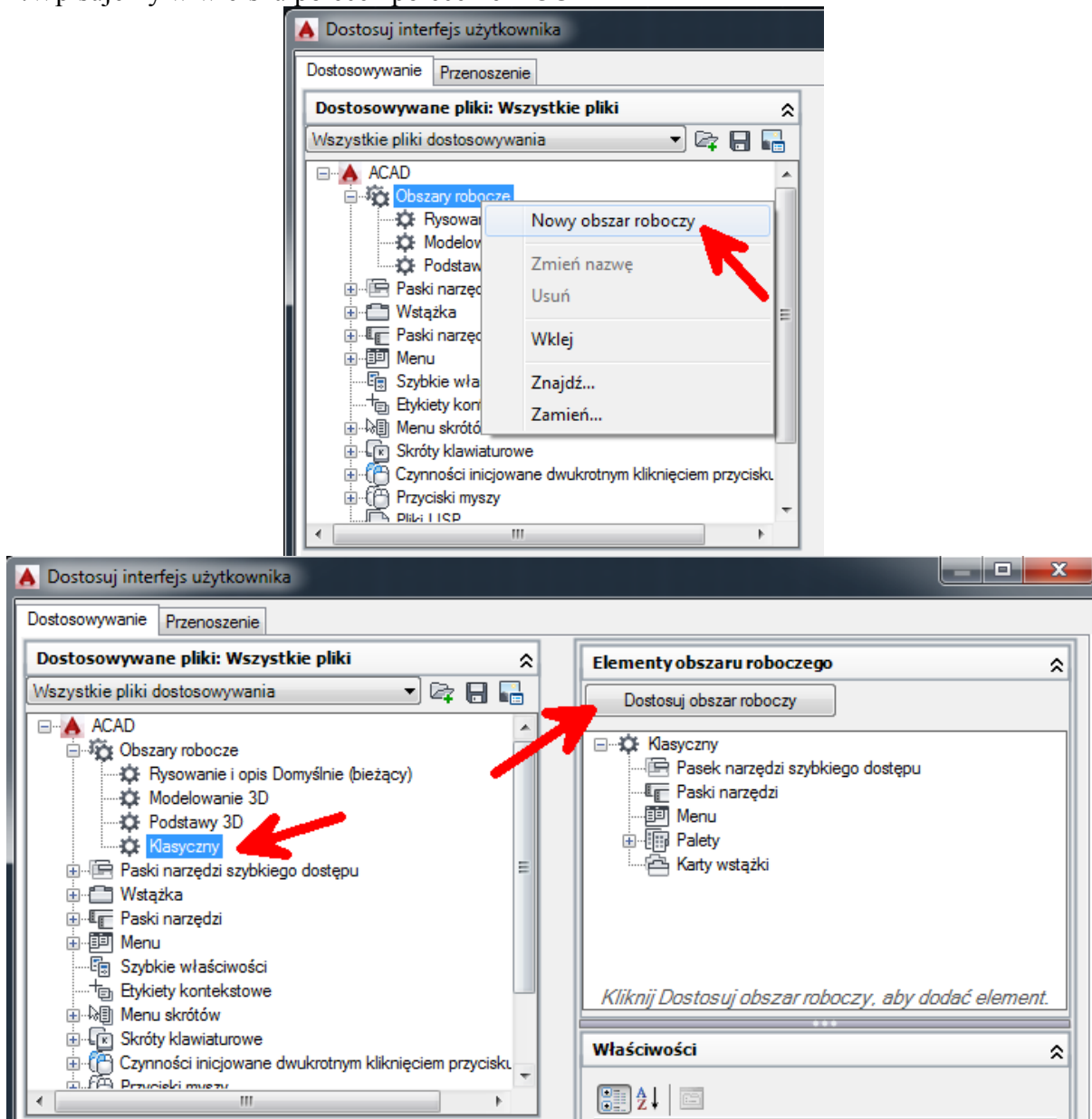
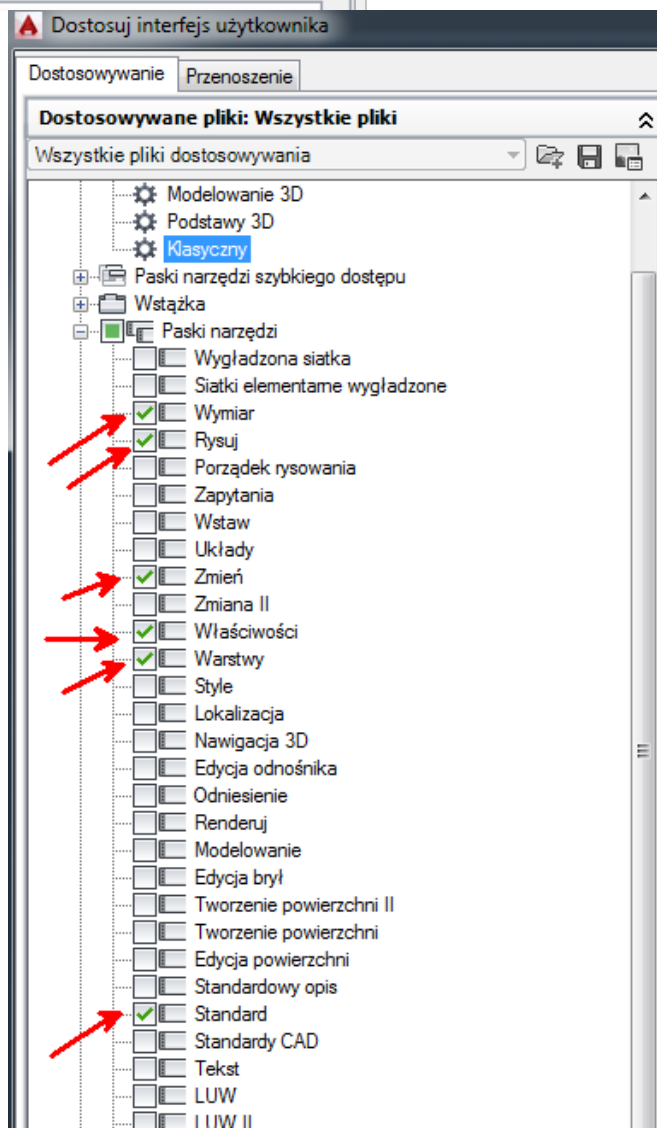
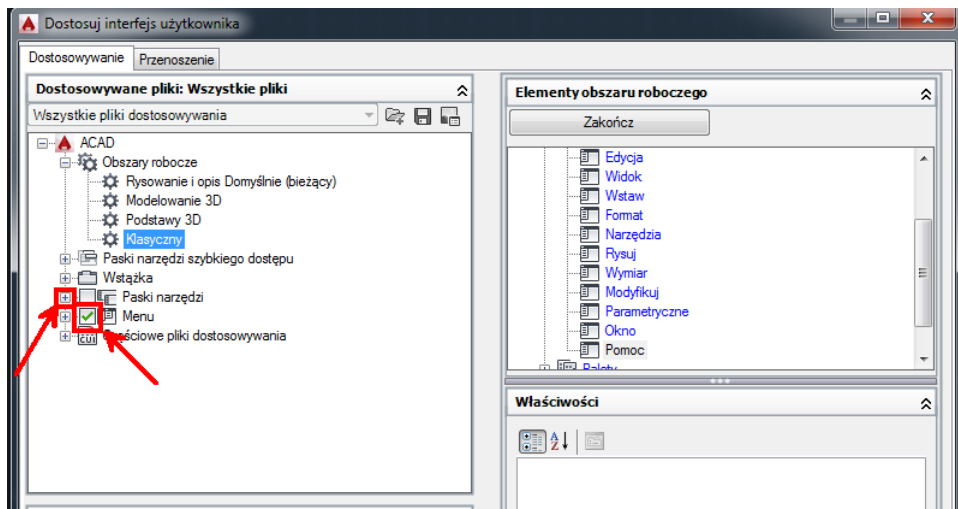
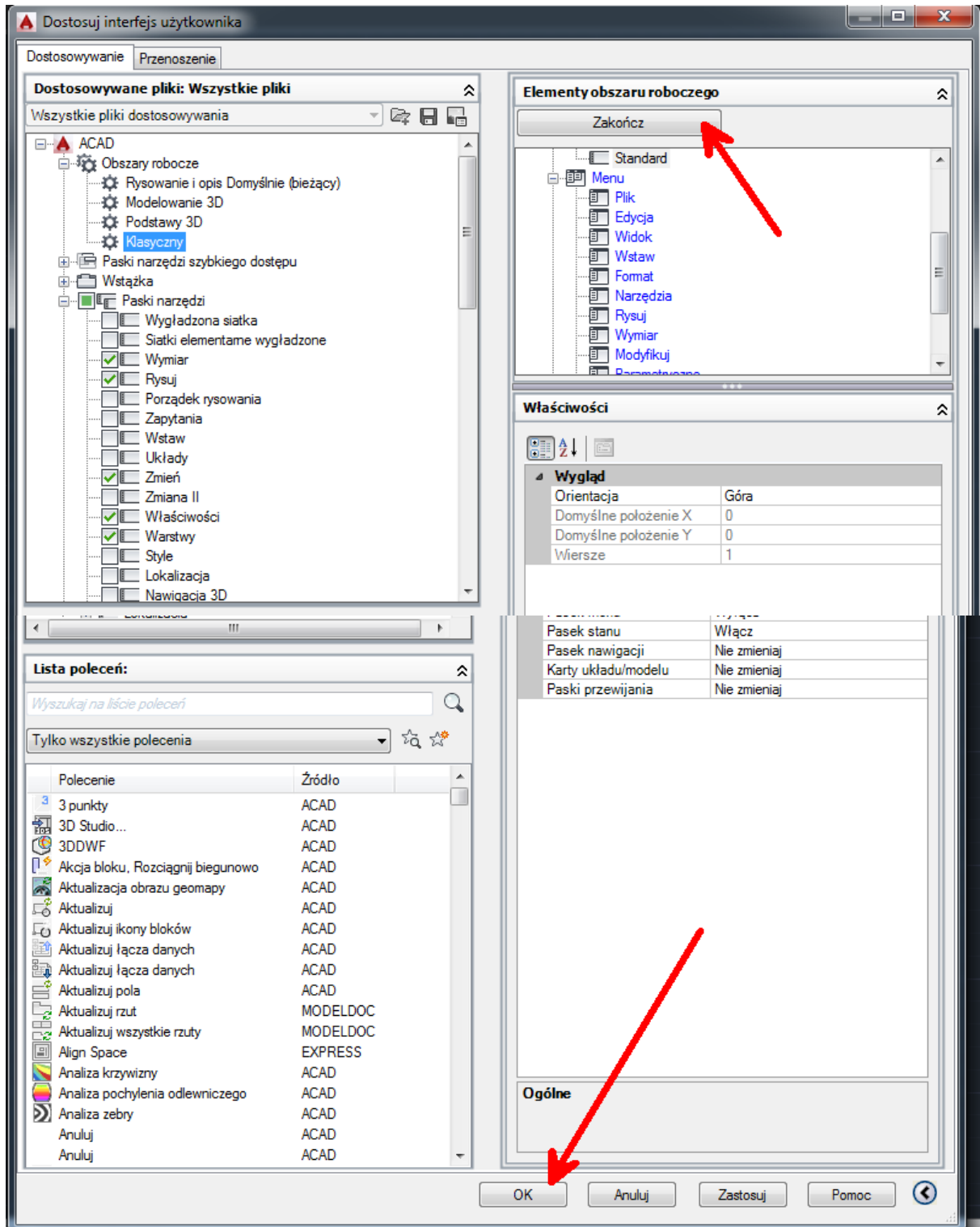


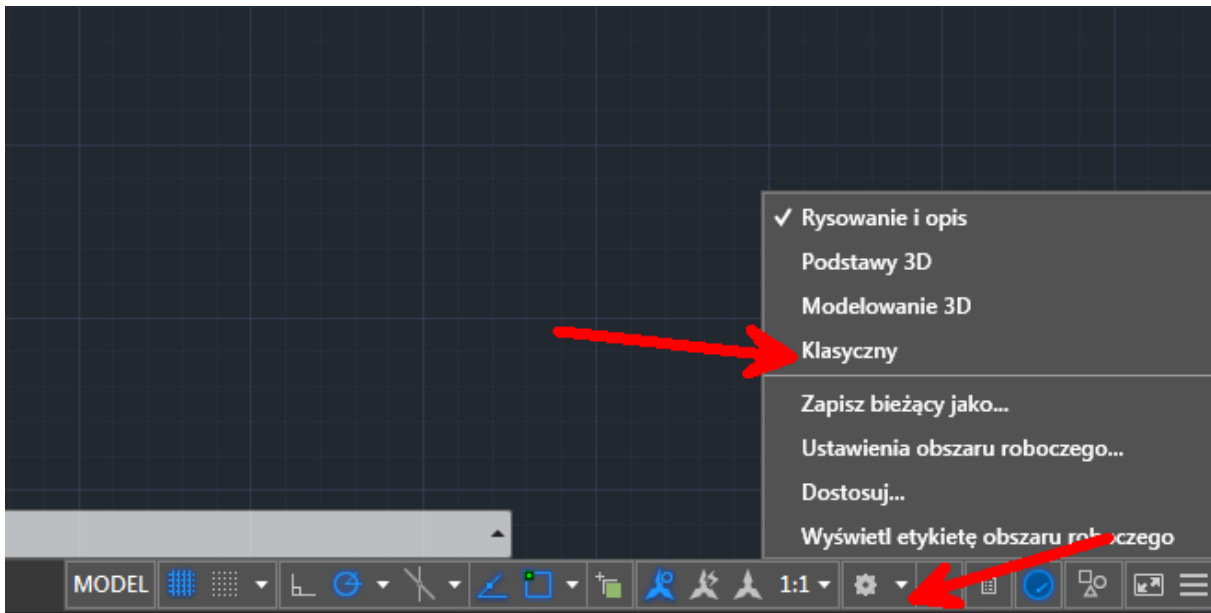
## AutoCAD 2015 – przywracanie interfejsu klasycznego

1. Wpisujemy w wierszu poleceń polecenie – CUI

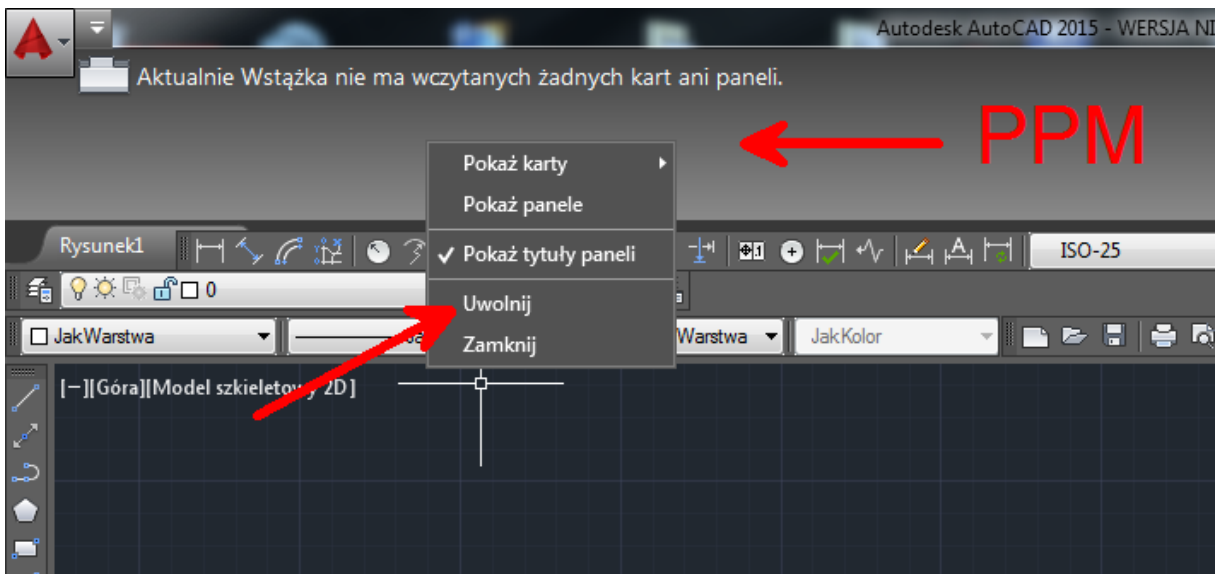


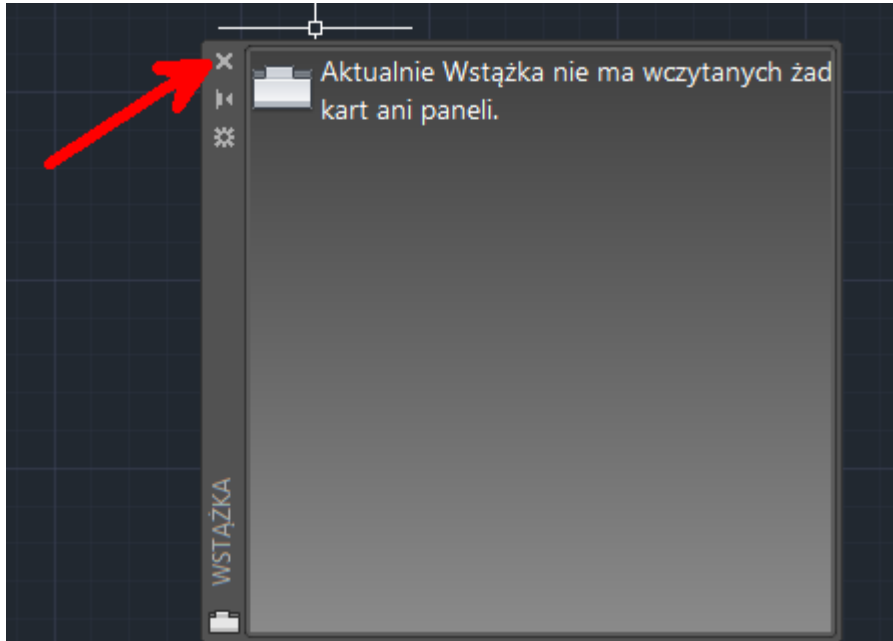




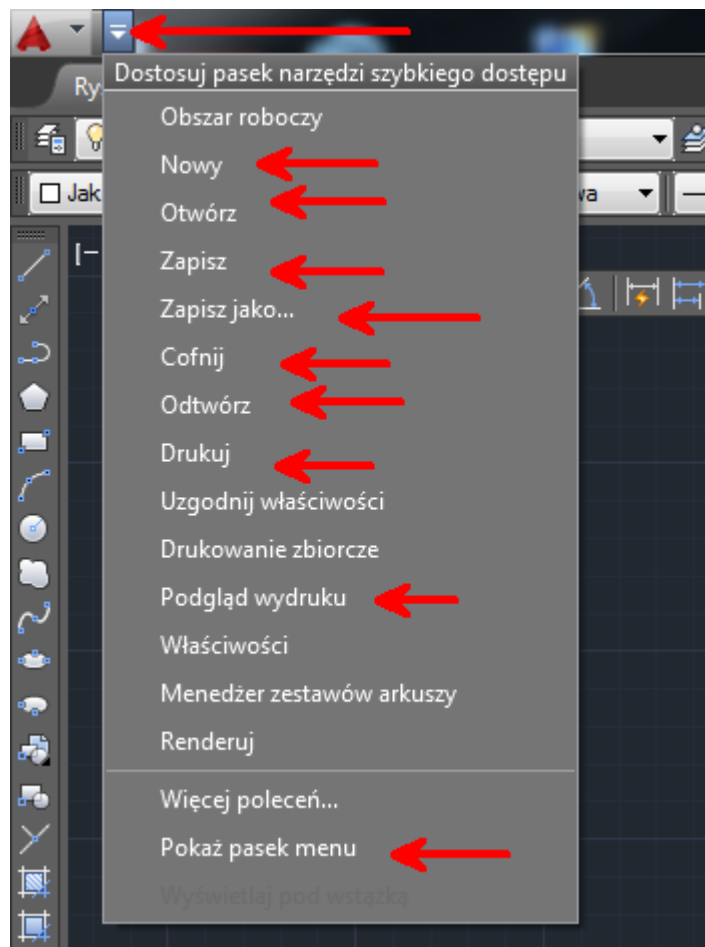


Klikamy prawym przyciskiem myszy na pozostałość po wstążce

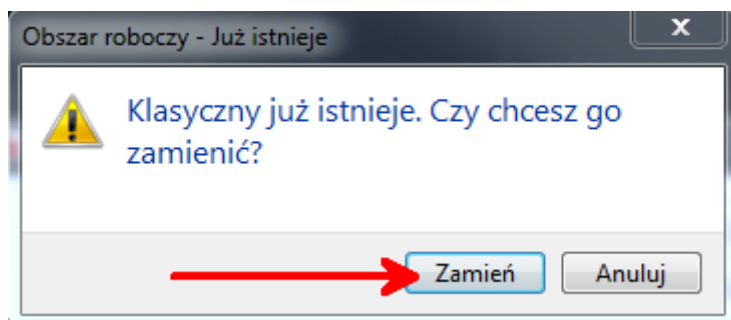
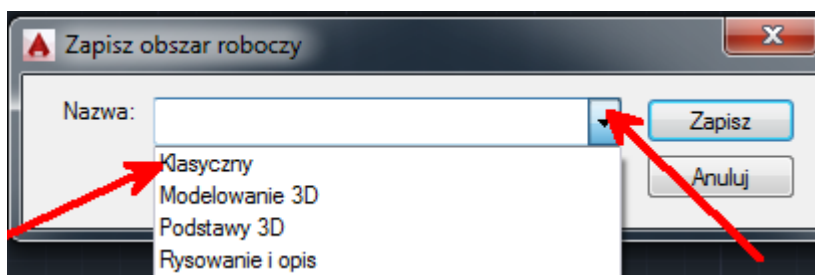
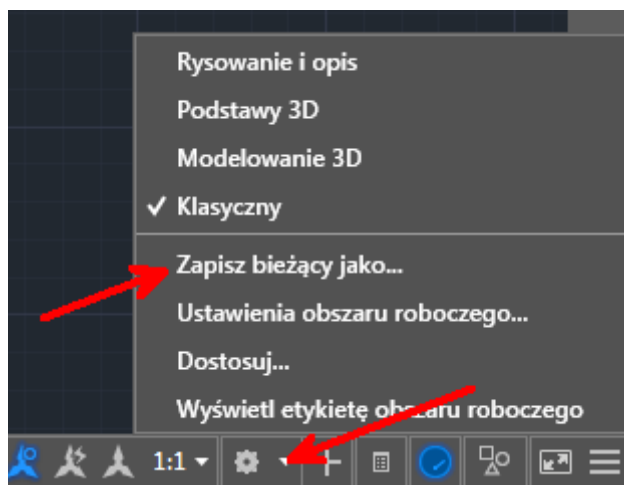




Włączamy jeszcze pasek górnego menu oraz poleceń w pasku szybkiego dostępu



Na koniec zapisujemy finalnie nasz nowo utworzony klasyczny obszar roboczy.



**GOTOWE!!!**